



1520 Jabez Run
Suite 303
Millersville, MD 21108
800.451.0649

REV.	DATE
△	07/20/16

TOLERANCES
UNLESS OTHERWISE
SPECIFIED:
DECIMAL .XXX = ± .005
.XX = ± .01
FRACTION 1/16
DEGREE ± 3°

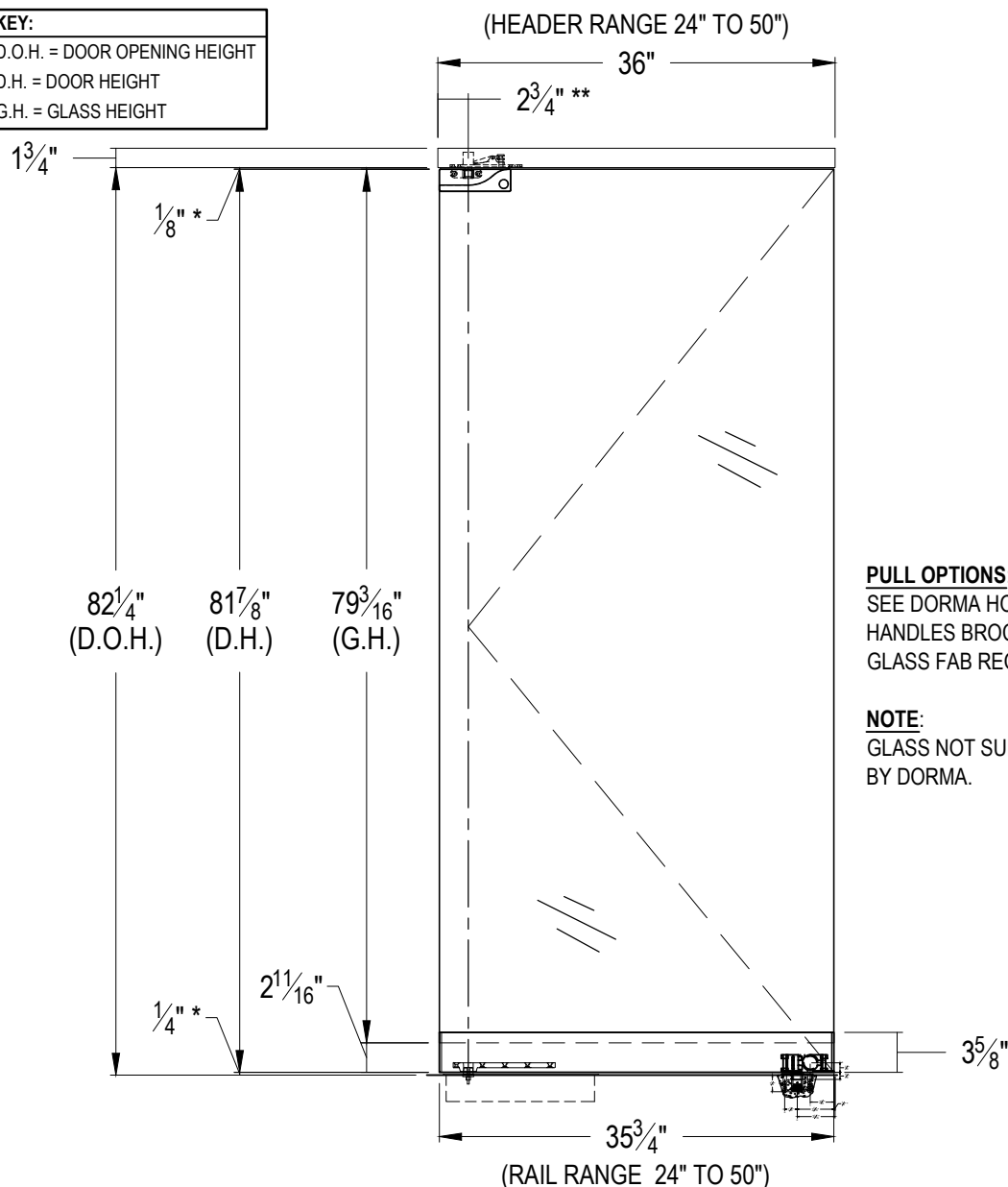
DORMA EASI-FRONTS DOOR SET
TYPE "BP" WITH LOCK - BP05-3S-PT20-01_45-BTS-U

PROPRIETARY AND CONFIDENTIAL
This document and information is the proprietary property of DORMA GLASS. Any party, by accepting this document and information, assumes custody and control hereof and agrees that such is given in confidence and this document and the information set forth therein will not be copied, used or reproduced in whole or in part, nor is contents revealed to any person in any manner that would cause the loss or impairment of the owner's legal rights including, but not limited to, the owner's common law copyrights thereto.

DRAWN BY: JA
DATE: 09.02.15
SCALE: 3/4"=1'-0"
SHEET: 1 OF 3
DRAWING NO. BP05-3S-PT20-01_45-BTS-U
DO NOT SCALE DRAWING

KEY:

D.O.H. = DOOR OPENING HEIGHT
D.H. = DOOR HEIGHT
G.H. = GLASS HEIGHT



PULL OPTIONS:
SEE DORMA HOUSINGS &
HANDLES BROCHURE.
GLASS FAB REQUIRED.

NOTE:
GLASS NOT SUPPLIED
BY DORMA.

ART. NO. BP02S.5.228 (SHOWN)

SINGLE DOOR SYSTEM

FOR 1/2" GLASS INCLUDES...

- QTY. 1 - #233.044 4-1/2" HEADER WITH #801.117 WALKING BEAM PIVOT
- QTY. 1 - #833.110 PT-20 TOP PATCH FITTING
- QTY. 1 - #225.009 3-5/8" BOTTOM RAIL WITH #227.002 ARM AND #925.019 LOCK
- QTY. 1 - BTS CLOSER [SPECIFY CLOSER]
- QTY. 1 - #927.091 5/16" SPINDLE
- QTY. 1 - #227.003 COVER PLATE
- QTY. 1 - #225.998 MORTISE THUMBTURN CYLINDER WITH SPLIT RING
- QTY. 1 - #225.999 MORTISE KEY CYLINDER WITH SPLIT RING
- QTY. 1 - #932.033 1-1/2" DUST PROOF STRIKE

ART. NO. BP02S.5.228.X

PAIRED DOOR SYSTEM

FOR 1/2" GLASS INCLUDES...

- QTY. 1 - #233.046 4-1/2" HEADER WITH #801.117 WALKING BEAM PIVOTS
- QTY. 2 - #833.110 PT-20 TOP PATCH FITTING
- QTY. 2 - #225.009 3-5/8" BOTTOM RAIL WITH #227.002 ARM AND #925.019 LOCK
- QTY. 2 - BTS CLOSER [SPECIFY CLOSER]
- QTY. 2 - #927.091 5/16" SPINDLE
- QTY. 2 - #227.003 COVER PLATE
- QTY. 2 - #225.998 MORTISE THUMBTURN CYLINDER WITH SPLIT RING
- QTY. 2 - #225.999 MORTISE KEY CYLINDER WITH SPLIT RING
- QTY. 2 - #932.033 1-1/2" DUST PROOF STRIKE

* OPENING CLEARANCES MAY VARY BASED ON SITE CONDITIONS. STANDARD CLEARANCES OF 1/8" USED UNLESS OTHERWISE INDICATED.

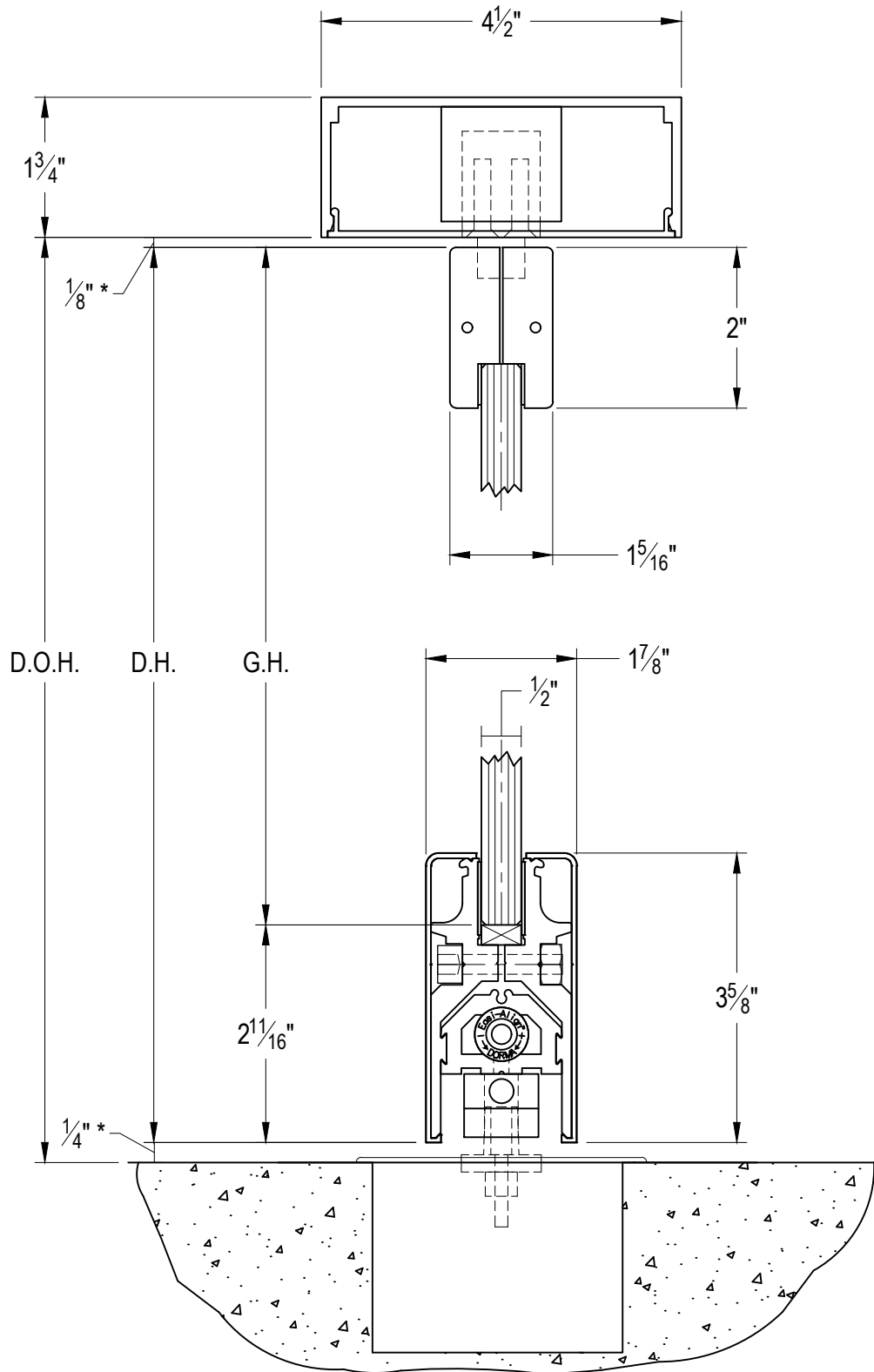
** PIVOT POINT CENTER LINE IS FROM FINISHED JAMB.

KEY:

D.O.H. = DOOR OPENING HEIGHT

D.H. = DOOR HEIGHT

G.H. = GLASS HEIGHT



DORMA
 1520 Jabez Run
 Suite 303
 Millersville, MD 21108
 800.451.0649

REV.	DATE
△	07/20/16

TOLERANCES
 UNLESS OTHERWISE
 SPECIFIED:
 DECIMAL .XXX = ± .005
 .XX = ± .01
 FRACTION ± 1/16
 DEGREE ± 3°

DORMA EASI-FRONTS DOOR SET
TYPE "BP" WITH LOCK - BP05-3S-PT20-01_45-BTS-U

PROPRIETARY AND CONFIDENTIAL
 This document and information is the proprietary property of DORMA GLASS. Any party, by accepting this document and information, assumes custody and control hereof and agrees that such is given in confidence and this document and the information set forth therein will not be copied, used or reproduced in whole or in part, nor its contents revealed to any person in any manner that would cause the loss or impairment of the owner's legal rights including, but not limited to, the owner's common law copyrights thereto.

DRAWN BY: JA
DATE: 09.02.15
SCALE: 1:2
SHEET: 2 OF 2
DRAWING NO. BP05-3S-PT20-01_45-BTS-U
DO NOT SCALE DRAWING

* OPENING CLEARANCES MAY VARY BASED ON SITE CONDITIONS. STANDARD CLEARANCES SHOWN ARE USED IN FORMULA.

KEY:

D.O.H. = DOOR OPENING HEIGHT

D.H. = DOOR HEIGHT

G.H. = GLASS HEIGHT



1520 Jabez Run
Suite 303
Millersville, MD 21108
800.451.0649

REV.	DATE
⚠	07/20/16

TOLERANCES
 UNLESS OTHERWISE
 SPECIFIED:

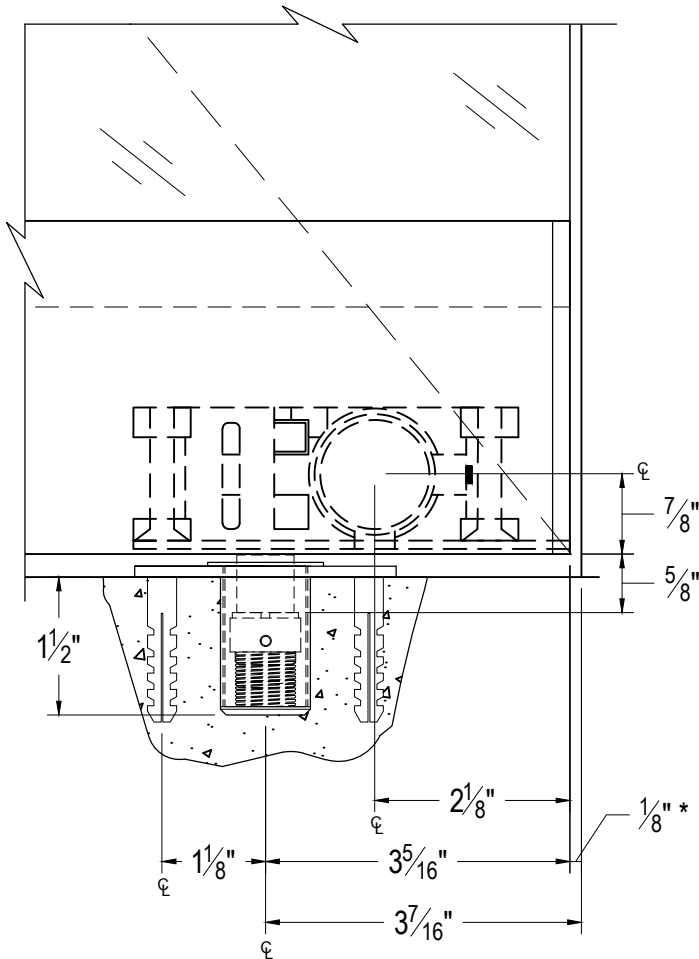
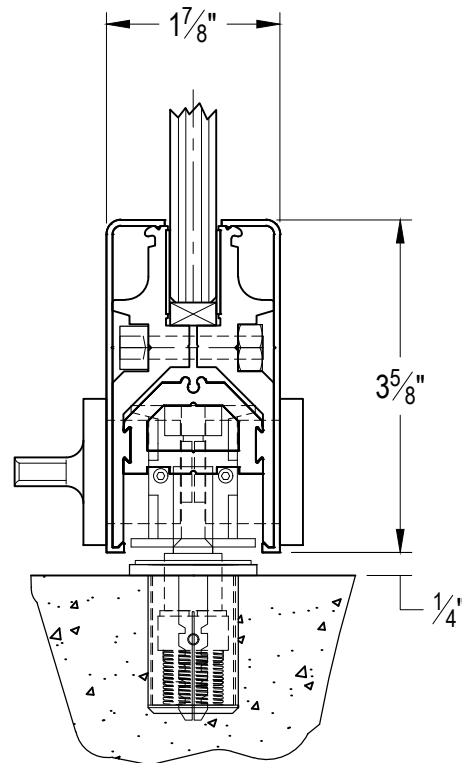
 DECIMAL .XXX = ± .005
 .XX = ± .01

 FRACTION ± 1/16
 DEGREE ± 3°

DORMA EASI-FRONT DOOR SET
TYPE "BP" WITH LOCK - BP05-3S-PT20-01_45-BTS-U

PROPRIETARY AND CONFIDENTIAL
 This document and information is the proprietary property of DORMA GLASS. Any party, by accepting this document and information, assumes custody and control hereof and agrees that such is given in confidence and this document and the information set forth therein will not be copied, used or reproduced in whole or in part, nor its contents revealed to any person in any manner that would cause the loss or impairment of the owner's legal rights including, but not limited to, the owner's common law copyrights thereto.

DRAWN BY: JA
DATE: 09.02.15
SCALE: 1:2
SHEET: 3 OF 3
DRAWING NO. BP05-3S-PT20-01_45-BTS-U
DO NOT SCALE DRAWING


ELEVATION VIEW OF LOCK LOCATION

BOTTOM RAIL SECTION
AT LOCK LOCATION

NOTE: DIMENSIONS SHOWN INCLUDE THE ENDCAP AND THE COVER.

* OPENING CLEARANCES MAY VARY BASED ON SITE CONDITIONS. STANDARD CLEARANCES SHOWN ARE USED IN FORMULA.